

# DESIGN INTENT DRAWING



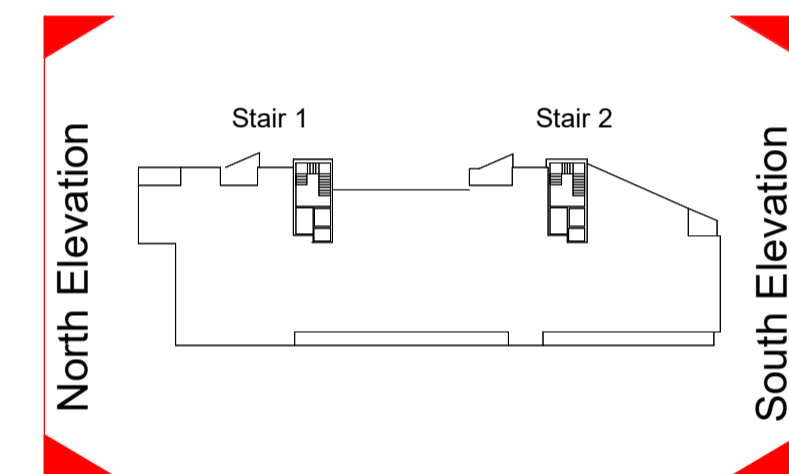
**1** GA - North Elevation  
1 : 100



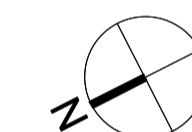
**2** GA - South Elevation  
1 : 100

### Material Legend

- 1 Oatmeal Brickwork
- 2 Glazed balustrade with power-coated metal handrails
- 3 Grey Brickwork
- 4 Powder Coated Aluminium Double Glazed Curtain Wall
- 5 Zinc Standing Seam Cladding
- 6 Powder Coated Pressed Metal Coping Detail
- 7 Powder Coated Pressed Metal
- 8 Powder Coated Aluminium Double Glazed Windows
- 9 Render Finishing Off White
- 10 Selected Limestone
- 11 Obscure Back-Painted Glazing
- 12 Charcoal Brickwork



### Key Plan (NTS)



| Rev           | Description | Date | Dr by | App by |
|---------------|-------------|------|-------|--------|
| Project Stage |             |      |       |        |

## PLANNING

Client:  
Eastwise Construction Swords Limited

Project:  
Hartfield Place  
Swords Road, Whitehall, Dublin 9  
D09 C7F8

Drawing Title:  
BLOCK F - North and South Elevation GA - 472 Units

| Drawn | Checked | Paper Size | Scale       | Date      |
|-------|---------|------------|-------------|-----------|
| DP    | CM      | A1         | 1 : 100 @A1 | Mar. 2022 |

| Project No. | Drawing No. | Classification | Revision |
|-------------|-------------|----------------|----------|
| HARTPL      | 062520      |                |          |

File Name:  
HARTPL-CWO-BF-ZZ-DR-A-062520

Status:  
S2-Suitable For Information